

AQUATRACK[®]

Hydrophilic Nitinol Guidewire

Instant response
through the turns



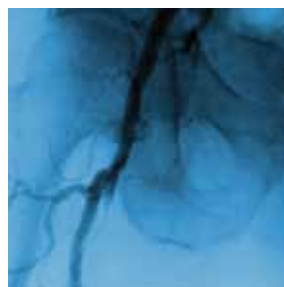
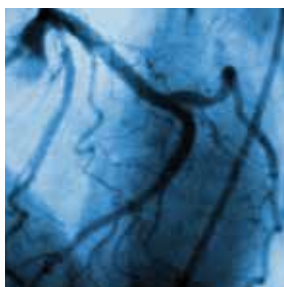
Cordis[®]
A Cardinal Health company

Instant response through the turns

AQUATRACK®

Hydrophilic Nitinol Guidewire

Easing access, however tortuous the anatomy

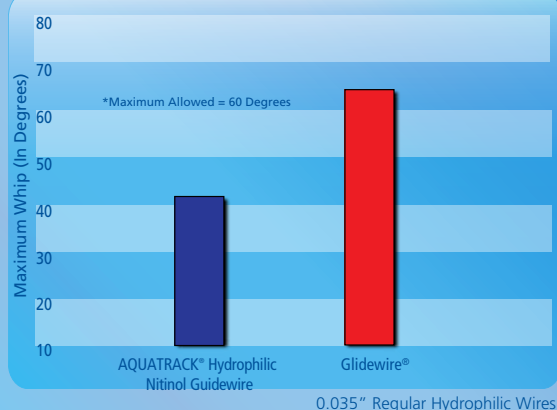


True one to one torque response*

Compared with the Terumo Glidewire®, AQUATRACK® Hydrophilic Nitinol Guidewire provides:

- More precise control for vessel selection and lesion crossability
- Immediate response, with significantly less whip
- Minimal risk of kinking, perforation or dissection

Torquability



Lasting lubricity*

The AQUATRACK® Hydrophilic Nitinol Guidewire jacket and hydrophilic coating:

- Minimise the push force required for wire deployment
- Lead to better lubricity retention for longer cases with less wiping of the wire
- Allow easier reinsertion after wiping due to controlled swelling of the coating

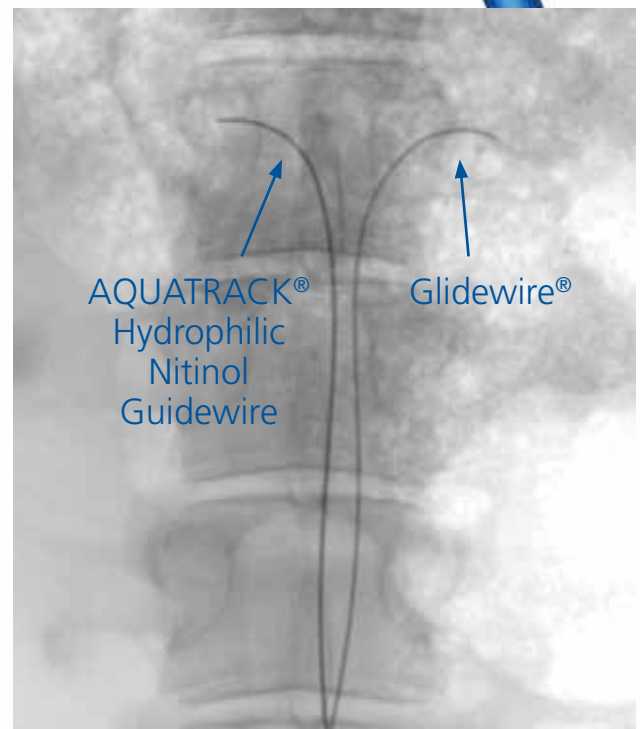
The Photolink® hydrophilic coating process:

- Creates a strong bond between the lubricious coating and the wire surface
- Reduces the possibility of embolisation from detached jacket debris by chemical bonding of the jacket to the wire

Superior radiopacity*

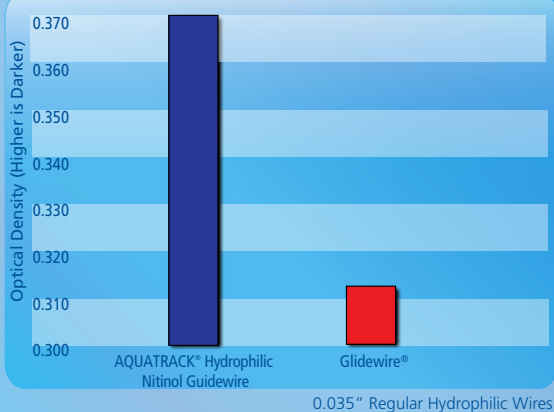
Compared with the Terumo Glidewire®, AQUATRACK® Hydrophilic Nitinol Guidewire:

- Shows up significantly darker under fluoroscopy due to increased radiopaque material in polymer jacket
- May allow faster and more accurate procedures with fewer complications due to increased visibility



Based on an in vivo animal testing

Visualisation



**Hydrophilic lubricity.
Bare wire torque.**

*Engineering Competitive Test Reports of the Aquatrack Hydrophilic Guidewire. Cordis. 2008

AQUATRACK®


Hydrophilic Nitinol Guidewire

Ordering Information

AQUATRACK® Hydrophilic Nitinol Guidewire				
Product code	Length	Stiffness	Taper	Tip
C3515-RSS	150cm	Regular	Short	Straight
C3515-RSA	150cm	Regular	Short	Angled*
C3515-SSA	150cm	Stiff	Short	Angled*
C3518-RSS	180cm	Regular	Short	Straight
C3518-RSA	180cm	Regular	Short	Angled*
C3518-SSA	180cm	Stiff	Short	Angled*
C3526-SSS	260cm	Stiff	Short	Straight
C3526-SSA	260cm	Stiff	Short	Angled*
C3526-RSA	260cm	Regular	Short	Angled*






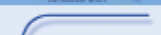




0.035" Packed 5 pcs per box

*Angled = 60 degree angle



Torque device
packaged with
every AQUATRACK®
Hydrophilic Nitinol
Guidewire

The AQUATRACK® Hydrophilic Nitinol Guidewire can be used with other Cordis product family. The products listed hereunder are only a selection. Please contact your local sales representative for further information on product compatibilities.

Selected Cordis TEMPO® AQUA® Diagnostic Catheters				
Shape	Length	4F	5F	
Berenstein (BERN)	100cm	452-413H0	452-513H0	
Cobra Child I (C1)	65cm	452-442V0	452-542V0	
Cobra Small Adult (C2)	65cm	452-443V0	452-543V0	
Cobra Small Adult (C2)	80cm	452-443S0		
Headhunter I (H1)	100cm	452-435H0	452-535H0	
Multipurpose Adult I (MPA1)	100cm	452-407H0	452-507H0	
Sidewinder Simmons Technique I (SIM1)	100cm	452-430H0	452-530H0	
Sidewinder Simmons Technique II (SIM2)	100cm	452-431H0	452-531H0	
Vertebral (VERT)	100cm	452-414H0	452-514H0	
Straight (STR)	125cm	SRD 6682		

0.038" Guidewire acceptance. Packed 1 per box.

Important Information:

Prior to use, refer to the "Instructions for Use" supplied with these devices for indications, contraindications, side effects, suggested procedure, warnings, and precautions. As part of the Cordis policy of continuous product development, we reserve the right to change product specifications without prior notification. For healthcare professionals only. © 2016 Cardinal Health. All Rights Reserved. CORDIS, the Cordis LOGO, AQUATRACK are trademarks or registered trademarks of Cardinal Health. All other trademarks are property of their respective owners. EU497-1 12/16.

Cordis
A Cardinal Health company